



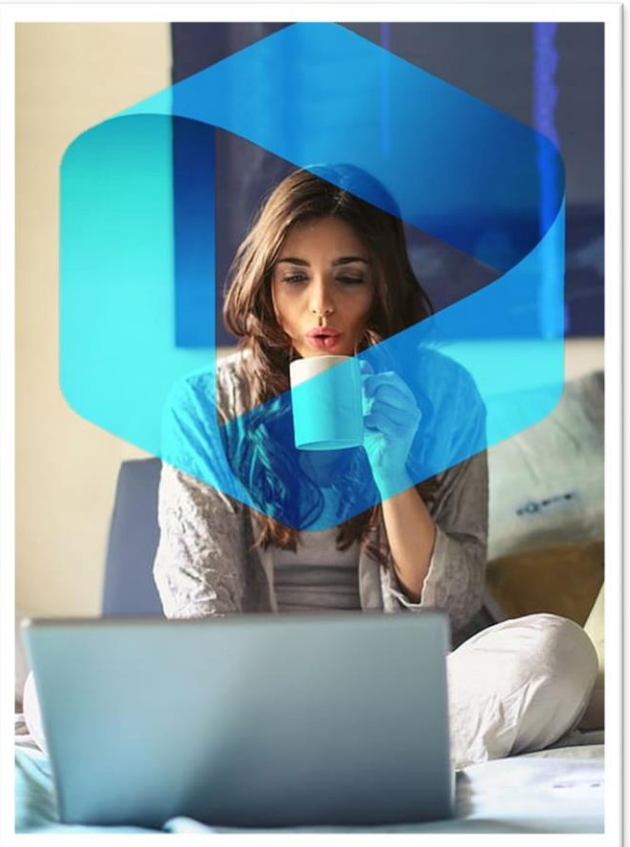
**pep**<sup>®</sup>  
worldwide:eu



## REMOTE TRAINING TO KEEP YOUR COMPANY GOING ~ the personal efficiency program ~

Many companies are now taking precautions to protect their employees from the spread of the coronavirus (COVID-19). One of the first things that happens in such situations is that people are told to work from home and events are cancelled. Often that means cancelling training as well, but there is a better approach! Time freed up for employees because regular operations cannot continue is the perfect time to catch up on long needed training. The only question is, how do you do this with employees under quarantine?

PEP<sup>®</sup> has the answer. Our training converts seamlessly from the physical in-person coaching style we are known for to online delivery using your technology of choice. Whether you use MS Teams, Zoom, Webex, or any other video conferencing or webinar tool, we adapt to any platform. If your company has no experience with video conferencing or webinars, we can introduce a platform that works for you and teach your employees as part of the experience.



### How does this work in practice?

The *Personal Efficiency Program* (PEP<sup>®</sup>) starts with a workshop in the morning where we introduce the participants to the theory of efficiency, how that applies to the workplace and the participants bring problems to the table to discuss. The duration of this can vary but for a group of six this section lasts typically 1.5 hours. Remotely, the PEP<sup>®</sup> coach can achieve the same workshop results in a webinar. The participants need only be online and in a position where they can talk.

The second stage is personal one-on-one coaching which is the core value of PEP<sup>®</sup>, where the participant develops efficiency techniques while they are working at their workspace. Remotely, this is done through any video conferencing tool where both participants can share each other's screens. After the workshop the PEP<sup>®</sup> coach would agree on a typically 1 hour slot of time with each participant for their personal session.

In this manner we can effectively deliver the same quality PEP<sup>®</sup> experience to every individual no matter where their location. Get in contact with us to learn more!

PEP<sup>®</sup> Worldwide - Europe  
[info@pepworldwide.eu](mailto:info@pepworldwide.eu)

+31(0)172 407 592  
[www.pepworldwide.eu](http://www.pepworldwide.eu)